

Parallels Snapshot Creation

Q: What is a Parallels Snapshot?

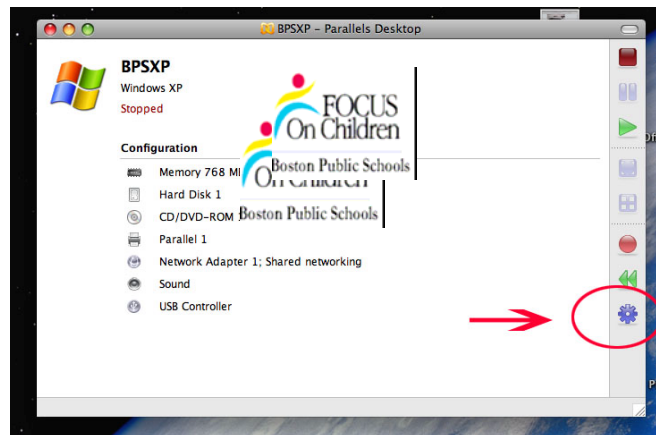
A: The Snapshot feature in Parallels allows a user to set a restore point for Windows XP. A Snapshot will allow a user to roll their Windows XP installation back to a set point, at which additional software may have been installed, or at the very least had Windows XP working properly. If you are familiar with Windows XP's "Last Known Good Configuration" restore feature, you have a good idea of what a Parallels Snapshot provides a user in terms of easily restoring a system to working order.

Q: How do I create a Parallels Snapshot?

A: Creating a Parallels Snapshot is a three step process, and should only take a few minutes to complete. Please follow the steps outlined below to accomplish the creation of a new Parallels Snapshot.

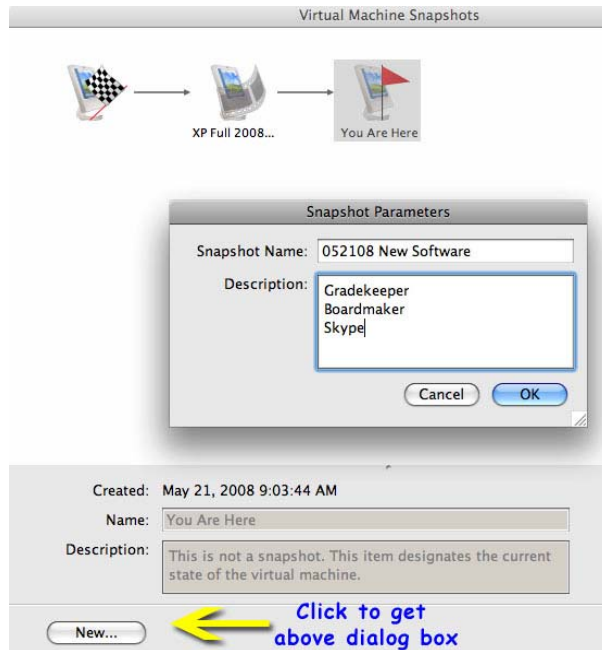
1. Shut Windows XP down by going to <Start> choose **Shutdown**. If Windows gives you the option to install Windows Updates, please ignore this option for the time being, and simply select the **Shutdown** option.

2. Once Windows XP has fully shut down, please select the Run Snapshot Manager icon, which looks like a gear, from the lower right of BPSXP - Parallels Desktop window.



3. Once you have the **Virtual Machine Snapshots** window up, you will need to make sure that the "You Are Here" Snapshot is highlighted.

Select <New...> from the lower left corner of the VMS window.



4. In the Snapshot Parameters window, please enter the following information so that you can identify your new Snapshot in the future:

Snapshot Name: you should name your new Snapshot with the date of creation and a short description

Description: list any/all software that you have installed so that you will have know exactly what this new Snapshot will contain.

5. Click <Ok>, at which point Parallels will create the new Snapshot, and place it between our original Snapshot (XP Full 20080303) and the current configuration (You Are Here).

Q: How do I restore my Windows XP Virtual Machine from a Snapshot? I am getting a Blue Screen of Death or a Parallels Driver Error!

A: In order to restore Parallels from a Snapshot you will need to launch the Snapshot Manager as described above in the Parallels Snapshot Creation documentation. Simply click on the Snapshot you want to restore to, which will either be the OIIT provided XP Full Snapshot, or any Snapshot which you have created, and select the "Go To" button. You can now click the Play icon from the right toolbar, and Windows will launch successfully.

